

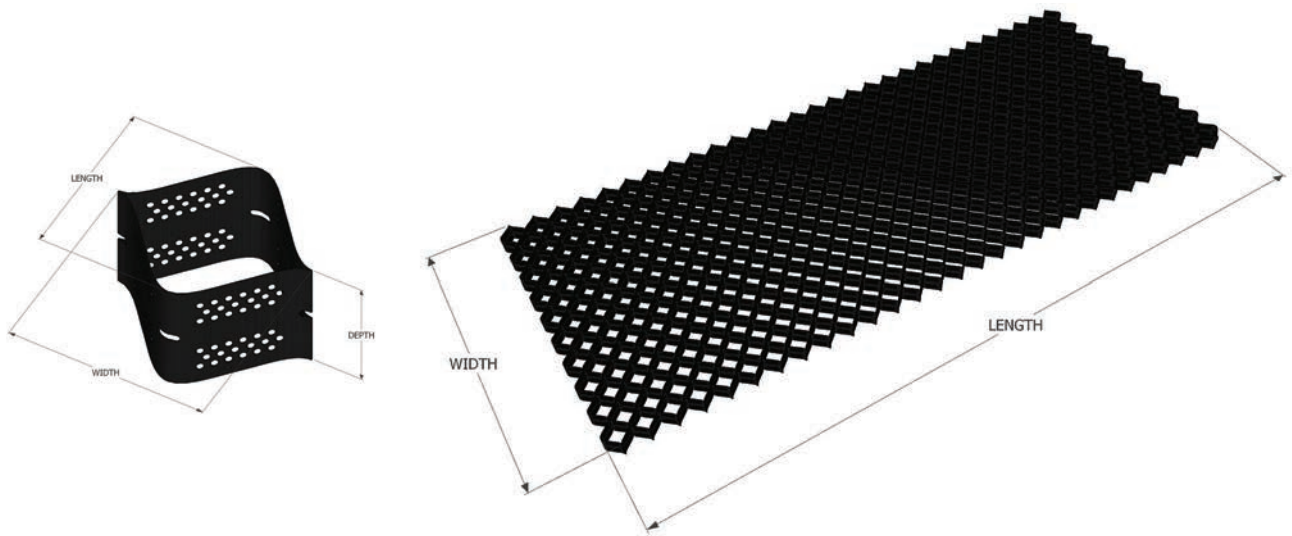


StrataWeb[®]

The honeycomb that reinforces and strengthens soil.

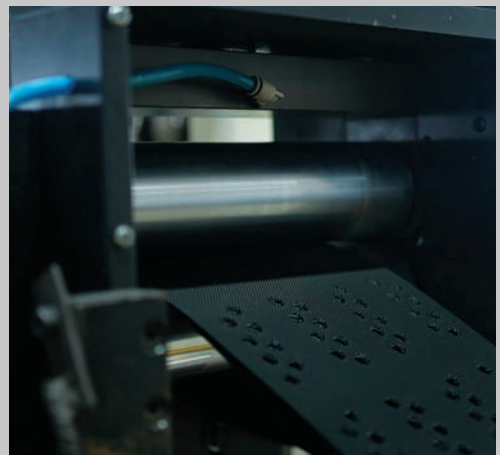
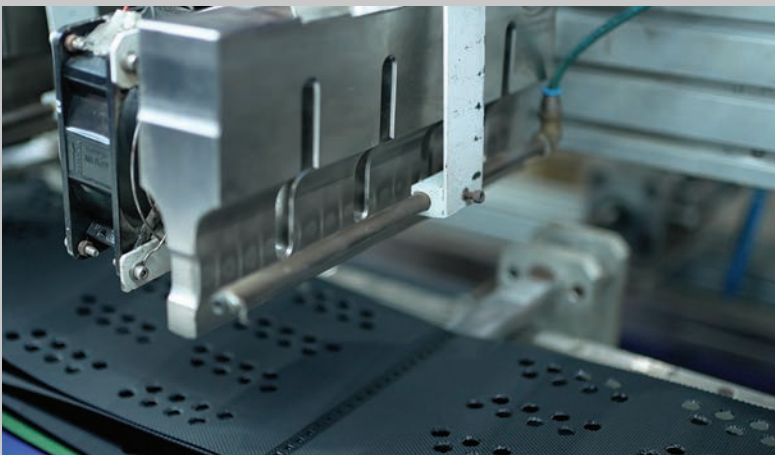
Overview

StrataWeb® is a unique, versatile, lightweight but strong three-dimensional cellular confinement system. Geocell technology, exemplified by the groundbreaking StrataWeb® system, harnesses the inherent strength of the three-dimensional honeycomb structure found in nature. This innovative approach to soil reinforcement tackles some of the most complex civil engineering problems, including load support over soft soils, erosion control on steep slopes, and the lining of lagoons, drainage channels, and landfills.



StrataWeb® utilizes interconnected strips of polymer, meticulously welded together at intervals to form a robust and flexible mattress. Filled with granular material, the resulting cellular confinement system efficiently transfers compressive and tensile stresses from heavy loads, providing higher load support capacity than any other geosynthetic product available.

StrataWeb® is a BIS compliant geocell, validated through OIT and HP OIT norms, ensuring long-term durability and mechanical stability in demanding environments such as railway bridge transition zones, embankments, and pavements.



Sectors and applications



Highways

Application -

- Basal reinforcement
- Slope erosion protection
- Chute drains



Low Volume and Secondary Roads

Application -

- Rural / village roads
- Temporary haul roads
- Road rehabilitation over weak subgrade



Ports, Yards and Heavy-duty Pavements

Application -

- Access roads over coastal marine clays and truck terminals
- Heavy duty container stack area / yard pavements



Landfills

Application -

- Liner protection
- Slope stability
- Erosion control
- Slope lining (municipal solid wastes/hazardous waste/mine tailing)



Canals and reservoirs

Application -

- Canal, reservoirs and ash pond lining
- Erosion control and vegetated canal slopes



Railway permanent ways and Earthworks

Application -

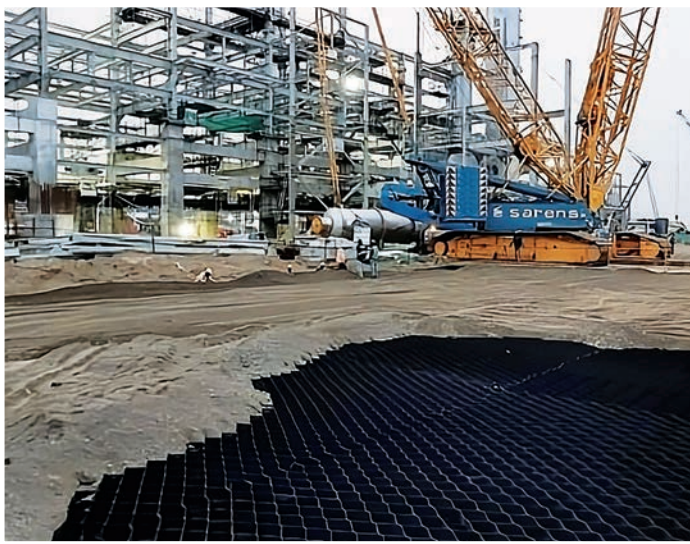
- Ballast and sub-ballast confinement
- Basal reinforcement for railway embankments
- Transition zones at bridge approaches
- Erosion control of track-side slopes



Defence Infrastructure

Application -

- Desert access paths
- Camouflage and soil-filled protection systems for bunkers and hangars
- Impact-resistant earth-filled barrier systems
- Anti-tank barriers



Mining, Energy and Industrial Infrastructure

Application -

- Heavy haul roads
- Equipment laydown areas, support systems for heavy crane movement and outrigger loads
- Protective cover systems for raw-water reservoirs, ash ponds and mine tailings dykes
- Slope erosion protection
- Coal stacking yards
- Pipeline support systems
- Tank and tank-pad foundations
- Wind energy generator foundation protection
- Loading and unloading terminals and depots
- Industrial grade slabs and mine overburden dumps



Townships/SEZs

Application -

- Construction access roads
- Parking lots
- Paved roads
- Landscaping
- Slope protection
- Retaining wall



Emergency solutions

Application -

- Rapid access roads
- Flood protection
- Slope protection
- Disaster management applications
- Rapid mobilization systems

Certifications

GAI-LAP



CE

IS 17483 :
PART 1



CM/L-
7100035688

IS 17483 :
PART 2



CM/L-
7100035587



Accessories

StrataFast™

StrataLock™

StrataCord™



Design life - Over 100 years



The cellular profile confines the infill and movement of particles, thereby preventing spreading of the material and thereby preventing erosion by means of confinement.



It spreads imposed loads over a wider area and thereby enhances load carrying capacities of weak subgrades.



It can be rapidly installed as compared to conventional solutions.



Comes in a collapsed flat pile of straps which is easily and economically transported.



Once placed, the system requires marginal maintenance, if any, over long-time intervals. This reduces life cycle costs.



Using locally available infill material for an engineered solution with StrataWeb® can bring down the overall solution cost.



StrataWeb® helps foster green solutions for slopes and reduces carbon footprint by minimizing logistics.

Strata support services

Professional solutions

Our International Support Services Team addresses the evolving needs of the infrastructure sector. We provide an eco-friendly and cost-effective geotechnical solution.

With a broad spectrum of innovative, high-quality products, precision-engineering, and timely, failsafe installation, surpassing customer expectations has become part of the course at Strata.

Strata's out-of-the-box problem-solving dexterity has pushed the boundaries of what is possible and performed engineering feats as diverse as using our products.

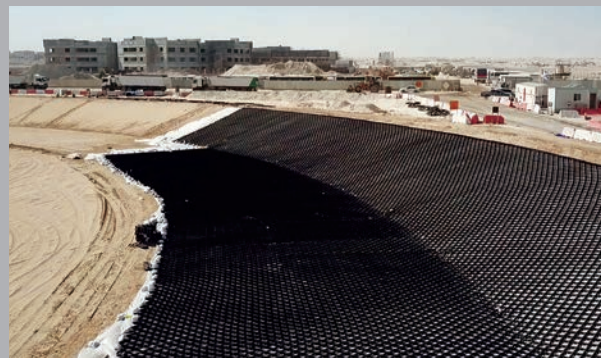
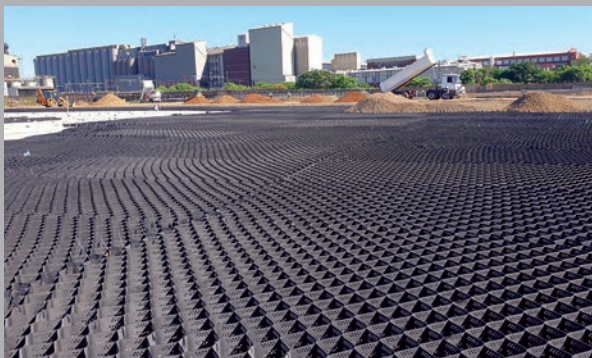
Beyond supplying quality products and designing innovative engineering solutions, Strata also offers fully integrated construction capabilities, and specialized contracting in select global markets.

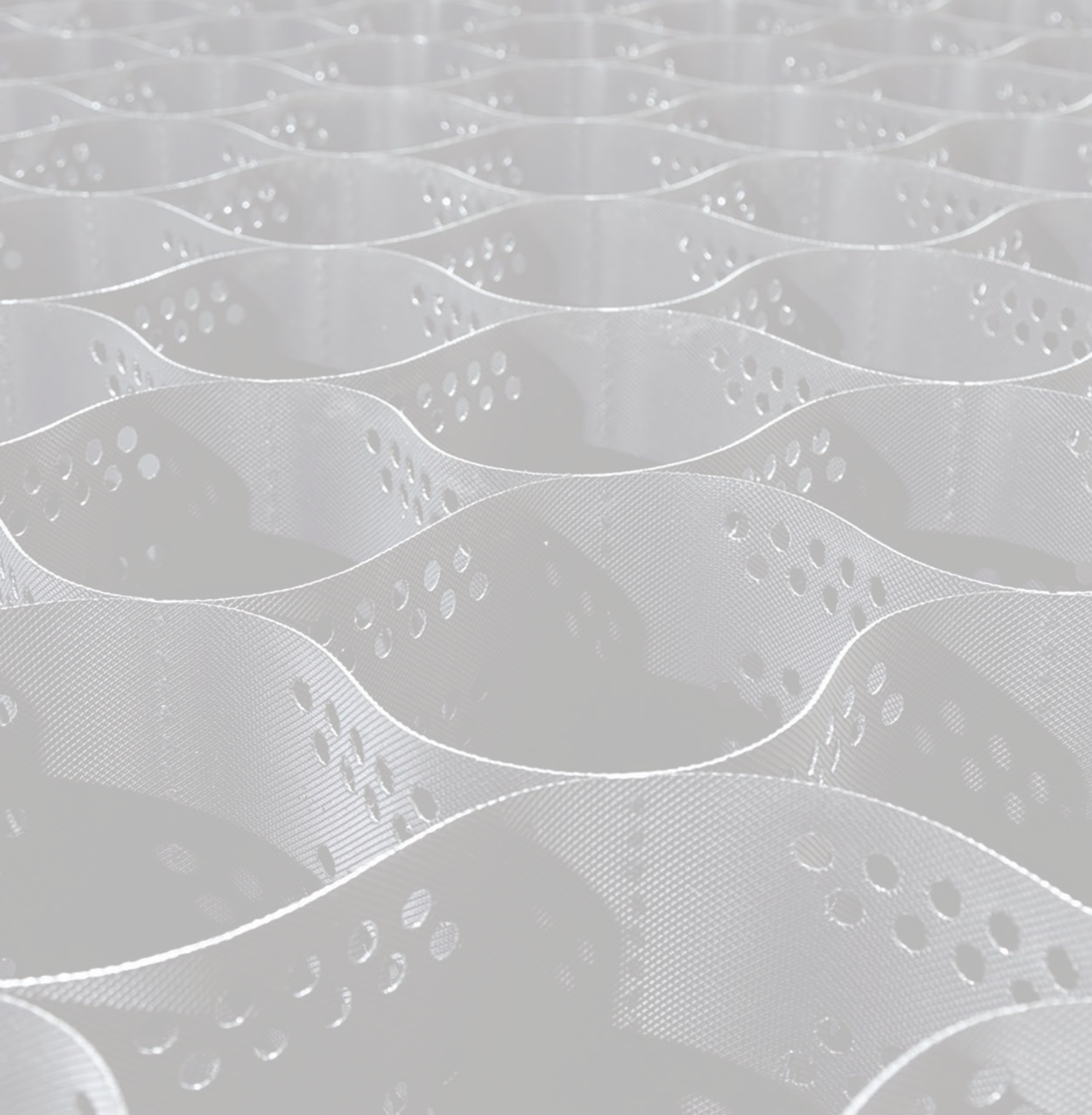
Design, applications and supply

Strata not only provides geotechnical products, but our team of engineers help you with your turnkey project by supplying you with technical knowledge and support as to how our products can help you finish your projects on time while keeping costs down.

Comprehensive and in depth

To ensure smooth installation of Strata products, our team is available to offer full technical guidelines like site specific method statements, tender proposals and documents, and a wide range of case studies and independent certification documents.





www.strataglobal.com | www.geogrid.com | technical@strataglobal.com
+91 22 40 63 5100 | India, Spain, USA

