

BUILDING THE FUTURE WITH GEOSYNTHETICS

Setting standards for sustainable, cost effective & longer-lived outcomes.



Solutions across
45+
countries

Networked-team of
1500+
worldwide

Strata's precision manufacturing facility at Gujarat, India has been setting global benchmarks in-line with world-class standards, while also putting us atop giants in light of manufacturing 6.5 million sqm of geogrids per month.



Strata's Manufacturing Facility, Gujarat

Our Vision

Strata envisions strengthening its presence in the global market while expanding its product portfolio. It aims to make geosynthetics available to all architects and engineers, enabling wider adoption across all spheres.

To transform infrastructure of the future by making geosynthetics a globally-accepted, sustainable alternative to present conventional methods.

Our Mission

To deliver high-quality products and geotechnical expertise that support the growth of infrastructure, whilst meeting with International Standards, and growing sustainability to be a mainstream and measurable offering across the board.



Why Strata

We reinforce the world's infrastructure from the ground up with innovative geosynthetic technologies engineered for durability, performance and sustainability.

We strengthen your industrial operations from the foundation upwards



A Global Leader in Geosynthetics Manufacturing



Presence in 45+ Countries



Built 10,000+ RS Walls with Zero Failure Rate



100-Year Design Life* on Product Build

*T&C Apply

Certifications and Standards



ISO 9001, ISO 14001, & ISO 45001



Achieved CE Mark



ISI Certified



NABL Certified



NTPEP Certified Agreement



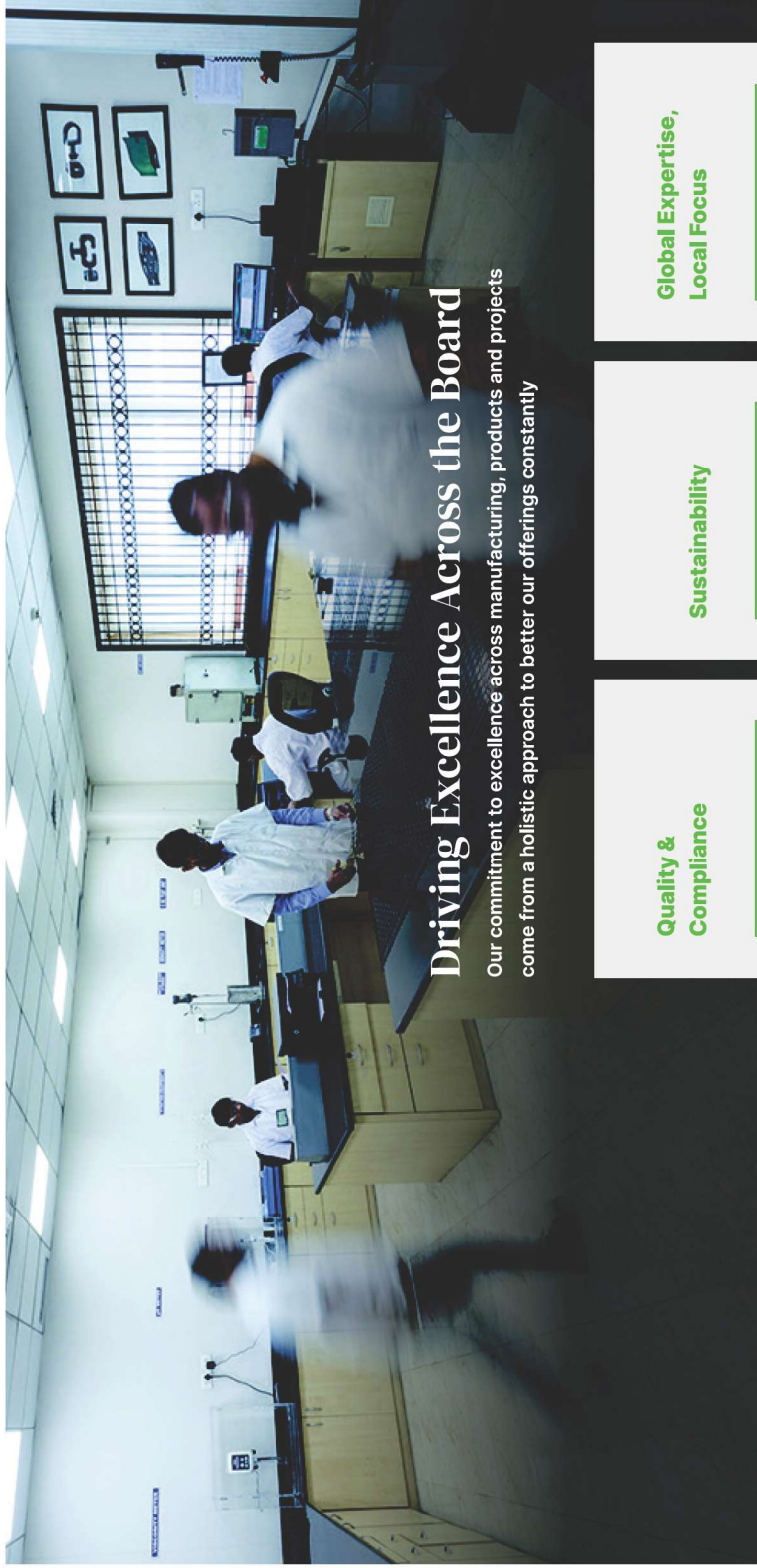
British Board of Agreement



AVT TRANSPORT AUTHORITY



NTPEP Certified Agreement



Driving Excellence Across the Board

Our commitment to excellence across manufacturing, products and projects come from a holistic approach to better our offerings constantly

Quality & Compliance

Adherence to world-class standards, with quality-certified products used globally.



Sustainability

Eco-friendly outcomes for project builds, resulting in a reduced environmental carbon footprint.











Global Expertise, Local Focus

Leveraging global knowledge while adapting to the specific nuanced localised needs of projects.



Strata through the time

	<p>1992</p>	<p>Establishment of Strata in the United States</p>
	<p>2004</p>	<p>Began in partnership with Strata Systems, Inc., USA</p>
	<p>2009</p>	<p>StrataGrid manufacturing</p>
	<p>2012</p>	<p>Launched StrataWeb®</p>
	<p>2018</p>	<p>Started new manufacturing plant (30 lacs sqm capacity)</p>
	<p>2022</p>	<p>New products (StrataTex HSR & StrataDrain), Enhanced StrataGrid capacity to 65 lacs sqm.</p>
	<p>2023</p>	<p>Patent approved for StrataWall™ EC and StrataBlock™ 2E system</p>
	<p>2025</p>	<p>Partners with The Carlyle Group CARLYLE</p>

Geogrids StrataGrid™

Offering exceptional tensile strength & a high molecular weight, it enables both vertical & horizontal soil reinforcement.

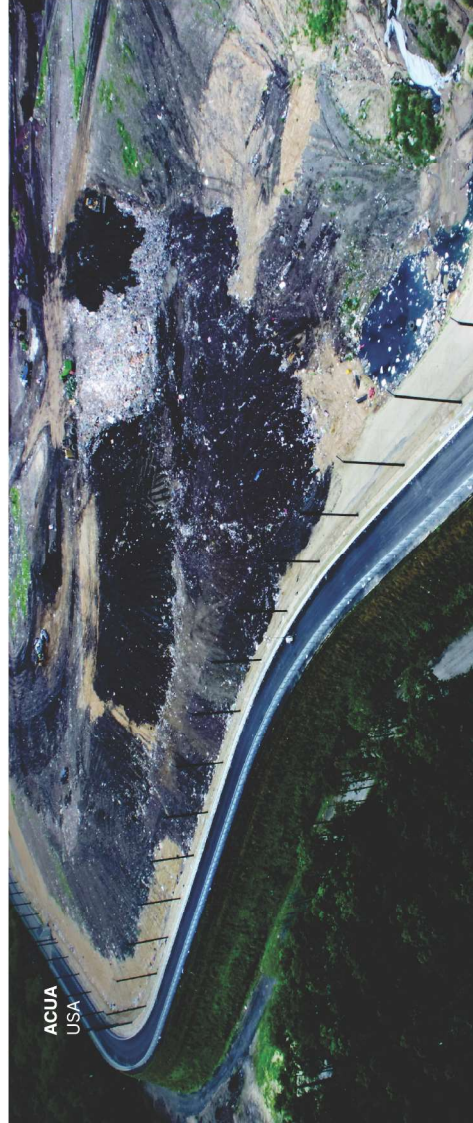


UV-stabilised for remarkable durability, with industry-leading elongation and stress-strain values that guarantee a lifespan of over 100 years* for structures.

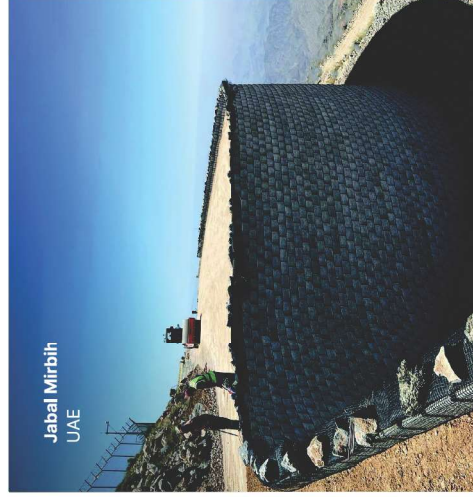
*T&C Apply

Available in uniaxial and biaxial series

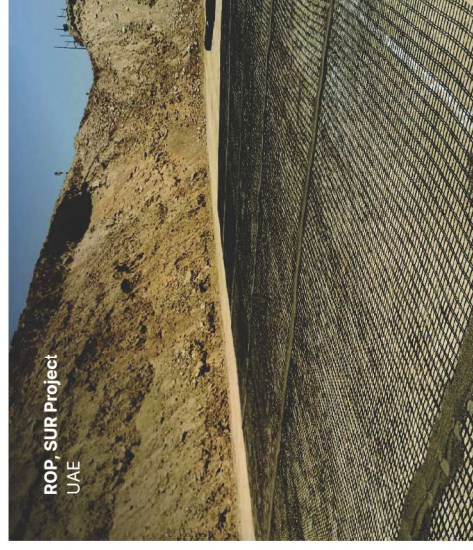
- Wide range of ultimate tensile strengths up to 1000 kN/m in uniaxial and 200 kN/m in biaxial
- Widths up to 5.7m (~ 18 m)
- Industry leading stress-strain values with low elongations



ACUA
USA



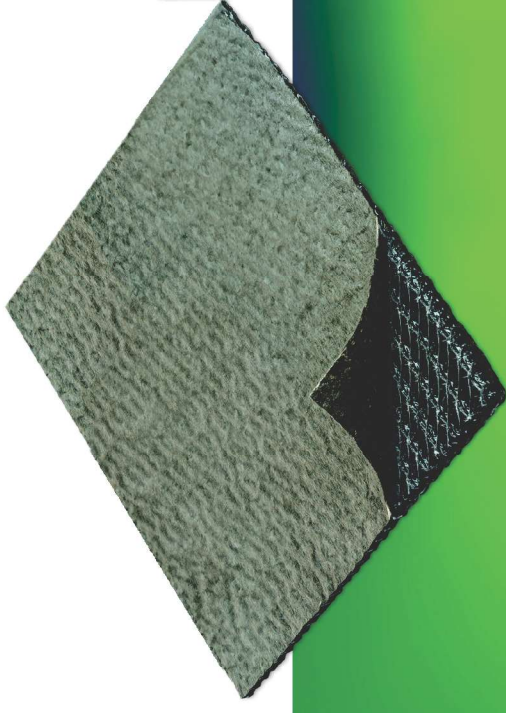
Jabal Mirbith
UAE



ROP-SUR Project
UAE

Drainage composites StrataDrain™

Drainage composite with industry leading high-flow capacity of 3L/ second



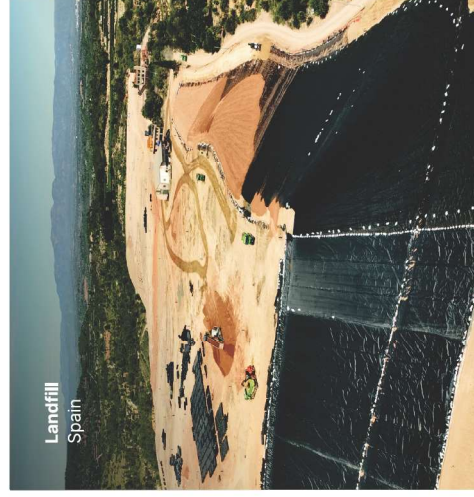
Built to have more than a 100-year* life, StrataDrain™ replaces CapEx & Opex costs, speeds project completion while adhering to world-class standards of quality.

*T&C Apply

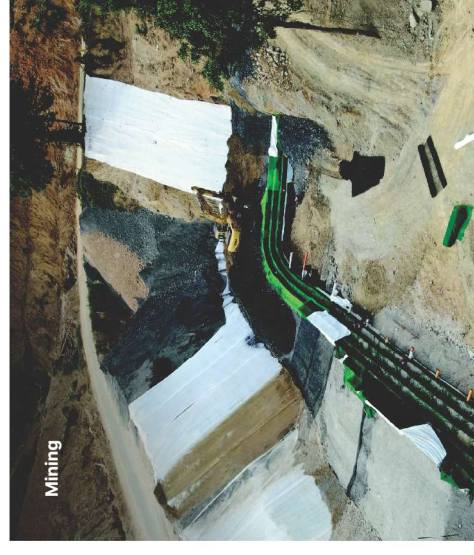
- Laminated in PP geotextile from 90 to 1.000 gsm (on one or both sides)
- Widths up to 4m
- Best transmissivity properties in all load bearing situations
- Industry leading high-flow capacity of 3L/ second



Landfill Spain



Landfill Spain



Mining

Geotextiles

StrataTex HSR™



A high-strength geotextile offering next-gen soil reinforcement.

Manufactured using high-grade polyester yarn, it offers low elongation, superior strain-values and high permeability, lending excellent structural stability. It is used for basal reinforcement on soft soil and load transfer platforms on piled embankments and construction of roadways.

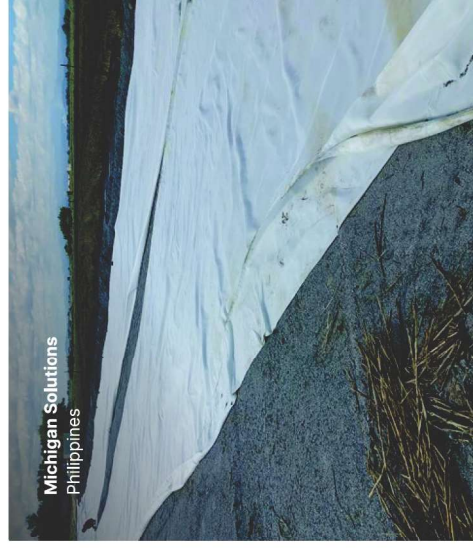
- Manufactured using high-grade polyester yarn with special high tenacity and low creep properties
- Widths up to 5.8m / 19ft wide
- Strength up to 1200 kN/m
- High molecular weight (>25000 g/ mol)



Masonville Dredge
USA



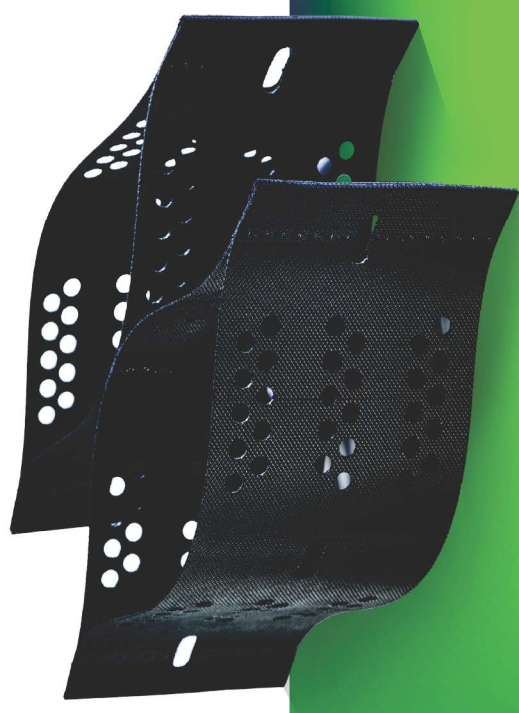
Myanmar



Michigan Solutions
Philippines

Geocells StrataWeb®

A three-dimensional soil confinement system for reinforcement, load support and erosion control.



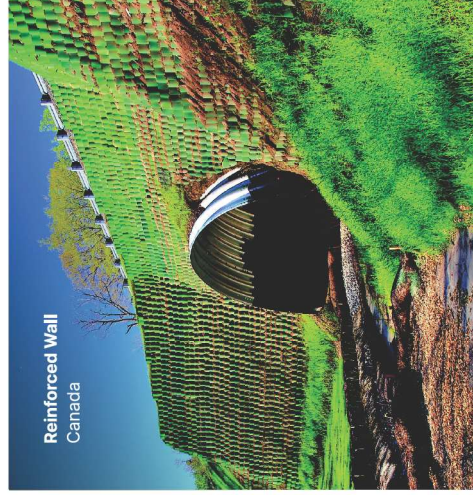
StrataWeb® geocell systems help achieve superior load support, erosion control, slope liner protection, and efficient drainage/ canal lining, leading to durable and environmentally friendly solutions for infrastructure projects.

- It confines infill from a cellular profile, preventing erosion and the spread of infill material
- Spreads imposed loads over a wider area and thereby enhances load carrying capacities
- Can be rapidly installed as compared to conventional solutions
- Comes in a collapsed flat pile of straps, which are easily and economically transported

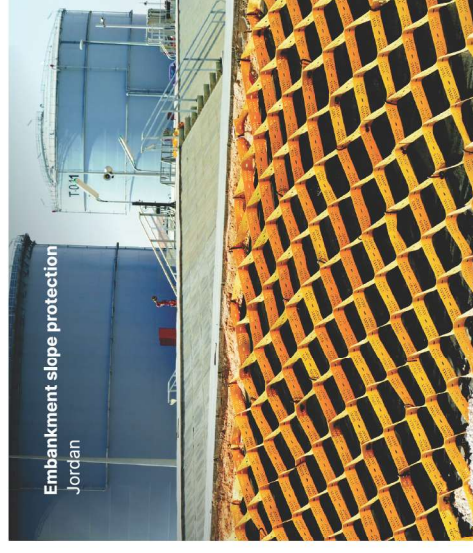
- Once used, it requires marginal maintenance, reducing life cycle costs
- Allows the use of site-won infill materials, further reducing costs
- Can use locally available infill material for an engineered solution with StrataWeb® to bring down the overall costs
- Helps foster green solutions for slopes and reduces carbon footprint by minimising logistics



Reservoir
Saudi Arabia



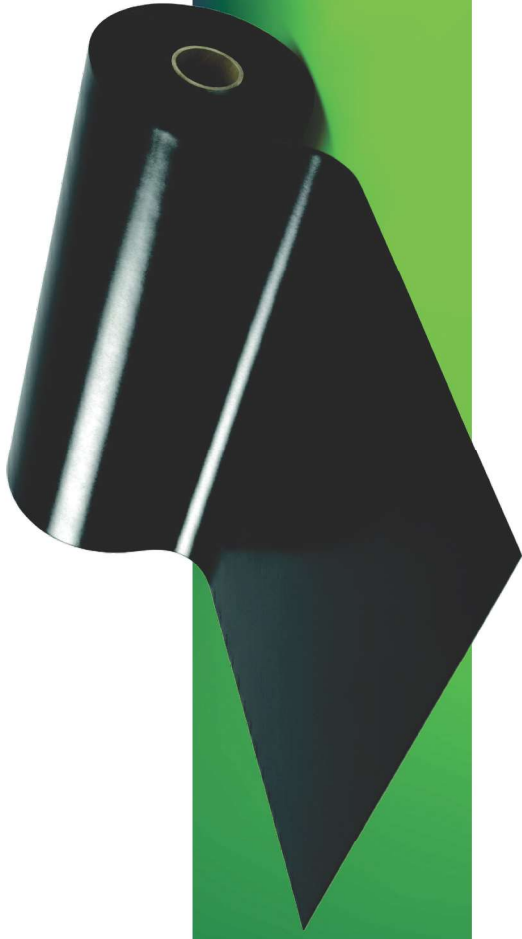
Reinforced Wall
Canada



Embankment slope protection
Jordan

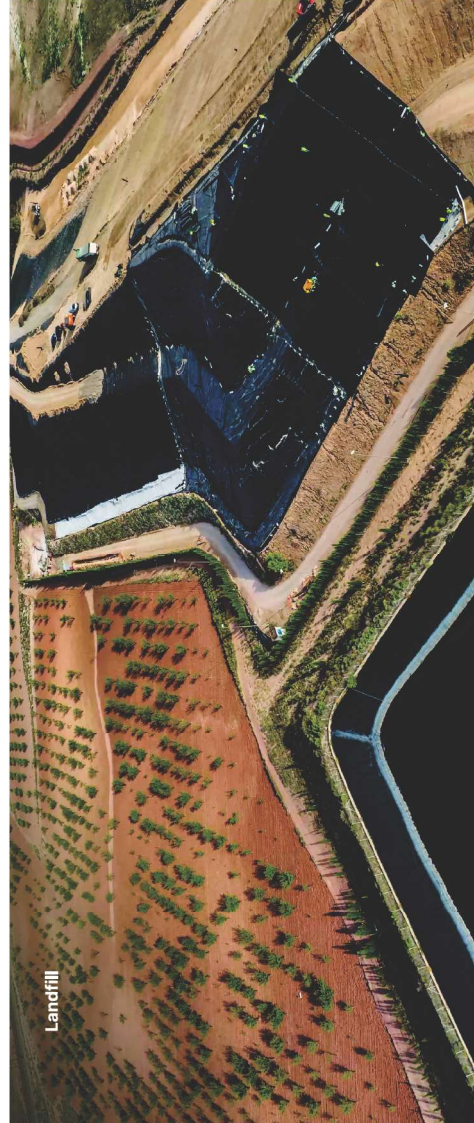
StrataGeomembrane

A high-performance impermeable barrier for containment, environmental protection and fluid control.

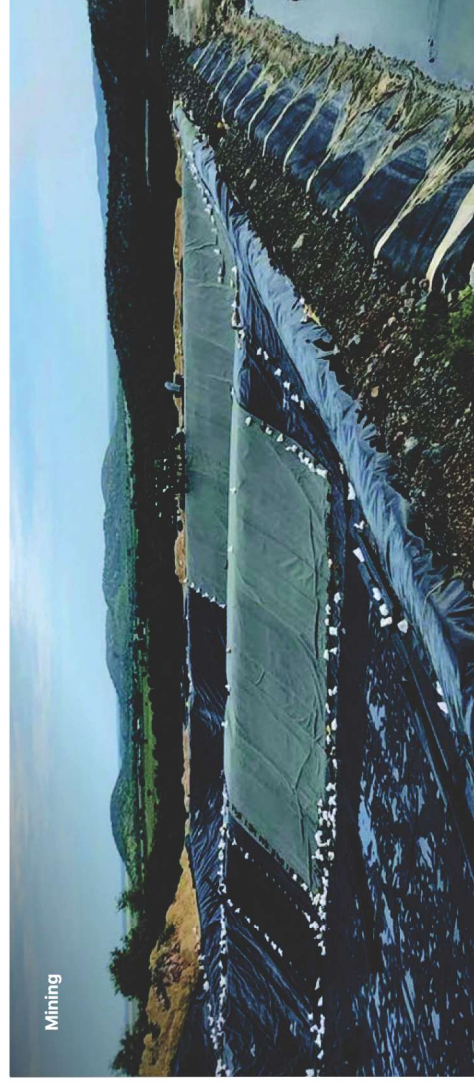


StrataGeomembrane is a high-performance, impermeable HDPE liner designed for geotechnical, environmental, hydraulic, and waterproofing applications. It is manufactured from high-density polyethylene (HDPE) granules, UV stabilized with carbon black along with suitable antioxidants and thermal stabilizers. It is available in both smooth and textured surface finishes. The geomembrane offers excellent chemical resistance, superior Stress Crack Resistance (ESCR) throughout its service life in aggressive soil and containment environments. It is widely used for seepage control and containment in hydraulic structures, waste management facilities, mining applications, and for waterproofing of underground and civil infrastructure works.

- Widths up to 8 m
- Thickness ranges from 0.75 mm to 3 mm with smooth or textured surfaces on one or both sides
- Manufactured using precision flat cast extrusion with an advanced feedback loop for automatic thickness control
- Multi-stage in-process quality checks supported by certified testing in GAL-LAP and NABL-approved laboratories
- Manufactured using carefully selected, premium-grade virgin raw materials to ensure consistent performance and long-term durability



Landfill



Mining

Non-woven Geotextiles StrataTex™ ST

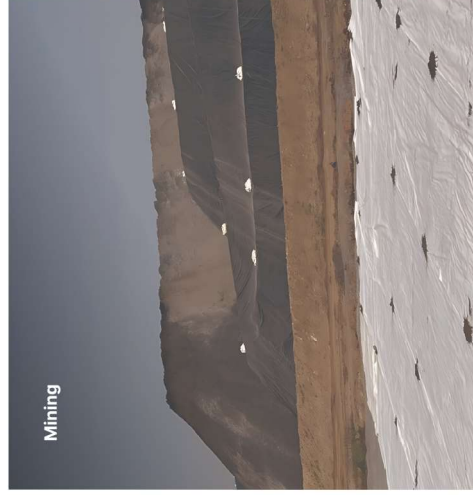
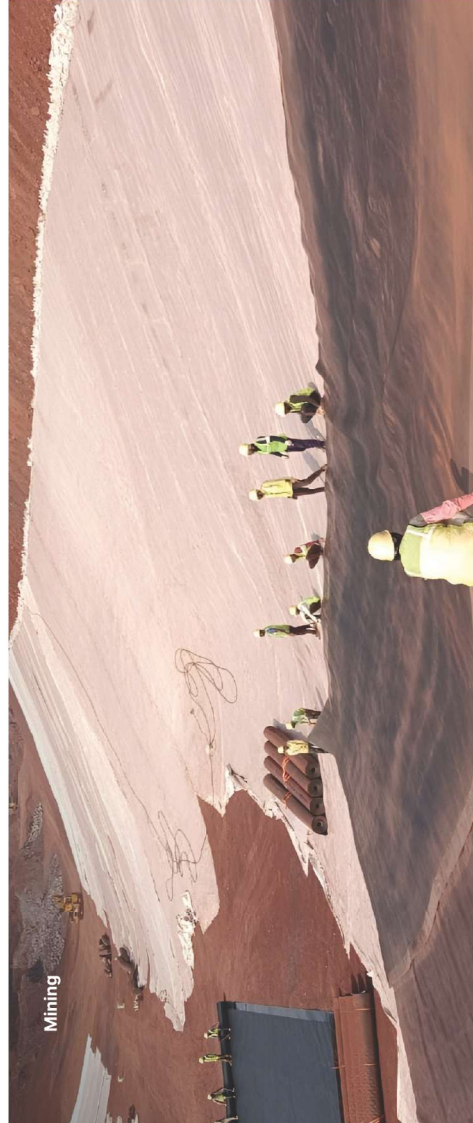
A permeable filtration and separation layer for drainage, soil stabilisation and protection.



Built on three decades of experience, Strata's non-woven geotextiles combine proven manufacturing know-how with strict quality assurance systems to deliver dependable separation, filtration and drainage solutions. Certified testing and compliance with international standards ensure confidence at every stage from production to installation.

- Widths up to 5.8 m (19 ft) for efficient large-area coverage
- Available from 70 GSM to 2000 GSM in both PP and PET polymers

- Compliance with international standards
- Backed by 30 years of manufacturing experience



Fence posts anchoring system

Sleeve-It®

A code-compliant fence post anchoring system that saves space, time and costs on your projects.

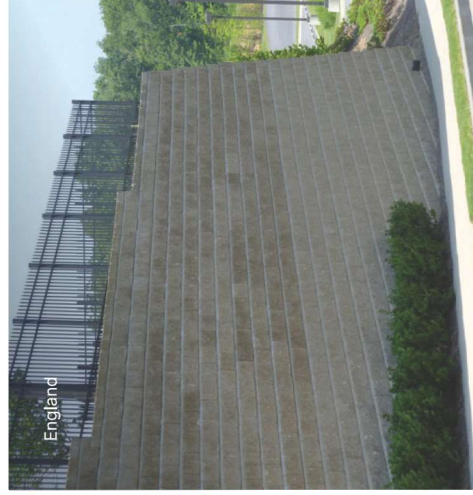


Sleeve-It® design allows stable fence footings to be integrated into the support structure of Segmental Retaining Walls (SRW) during construction, easily building code-compliant fences, eliminating the need for .91 meter offset requirements of IBC 1015.2

- Code-compliant with IBC 1015.2, IBC 1607.8.1 and ASCE 7 4.5.1
- Eliminates offset requirements for rails and fences with .91 meters of the edge of the open side of SRWs
- Lightweight and unitary design that is easy to stack, transport and use
- Accommodates use with most SRW fence types
- Made from 95% post-consumer polypropylene



Post Anchoring System



England



DHL